



Douglass

Douglass Family

MORTUARY

"Celebrating Life Through Memories Since 1945"



Telephone (310) 632-1171 · Fax (310) 632-7970 · Se Habla Español
3363 East Imperial Highway · Lynwood, California 90262 · FD803
www.douglassfamilymortuarylynwood.com

FUNERALS · CREMATIONS · NATIONAL/INTERNATIONAL TRANSFERS · FLOWER SERVICE

GENERAL PRICE LIST

(Prices effective as of September 6, 2017, and subject to change without notice.)

To the families we are privileged to serve:

This general price list reflects my family's commitment to provide the highest quality of service and consumer information to each family who calls upon our services.

We feel it is important that you understand the alternatives available to you as well as the specific costs for each of these services. We feel confident you will find the information you need within this price list. However, should you have any questions, your counselor is well qualified to answer them for you.

We are honored by the confidence you have placed in us and I know you will find Douglass Family Mortuaries worthy of that trust.

Sincerely,

Sean W. Douglass

Sean W. Douglass, President

PRIOR TO DRAFTING ANY CONTRACT FOR GOODS OR SERVICES, THE RESPONSIBLE PARTY OR THE DECEDENT'S SURVIVOR WHO IS HANDLING THE FUNERAL ARRANGEMENTS IS ENTITLED TO RECEIVE A COPY OF ANY PRE-NEED AGREEMENT IN THE POSSESSION OF THE FUNERAL ESTABLISHMENT THAT HAS BEEN SIGNED AND PAID FOR, IN FULL OR PART, BY OR ON BEHALF OF THE DECEDENT.

FOR MORE INFORMATION ON FUNERAL, CEMETERY AND CREMATORY MATTERS CONTACT:
DEPARTMENT OF CONSUMER AFFAIRS – CEMETERY & FUNERAL BUREAU
1625 N. MARKET BLVD., SUITE S-208 · SACRAMENTO, CALIFORNIA 95834 · PHONE (916) 574-7870

Funeral Service Packages

A majority of families we serve tend to select funeral arrangements and services in keeping with the service options listed below. While you are free to arrange services on an itemized basis, the below service plans are designed to simplify the funeral arrangement process, and are offered on a cost-saving basis. As the options include various types of services, no credit for deletions or substitutions is possible. If you ask us to conduct more than one funeral service, additional charges may apply. Your funeral counselor welcomes your questions.

Service Option "A" – Traditional Service

\$2,395.00

- BASIC SERVICES OF THE FUNERAL DIRECTOR AND STAFF
- TRANSFER OF REMAINS TO FUNERAL HOME (WITHIN 30 MILE RADIUS AND OR 1 HOUR)
- EMBALMING
- DRESSING, CASKETING & BASIC COSMETIC CARE OF THE DECEASED
- USE OF FACILITIES AND STAFF SERVICES FOR VIEWING AND/OR VISITATION (4 HOURS FROM 4-8 PM)
- STAFF SERVICES FOR FUNERAL CEREMONY AT AN OUTSIDE FACILITY OR IN OUR CHAPEL
- STAFF SERVICES FOR INTERMENT/COMMITTAL CEREMONY
- USE OF OUR FUNERAL COACH (WITHIN 30 MILE RADIUS)

Total Itemized Price \$4,430.00

Total Package Savings \$2035.00

Service Option "B" – Traditional Service with Cremation

\$2,295.00

- BASIC SERVICES OF THE FUNERAL DIRECTOR AND STAFF
- TRANSFER OF REMAINS TO FUNERAL HOME (WITHIN 30 MILE RADIUS AND OR 1 HOUR)
- EMBALMING
- DRESSING, CASKETING & BASIC COSMETIC CARE OF THE DECEASED
- USE OF FACILITIES AND STAFF SERVICES FOR VIEWING AND/OR VISITATION (4 HOURS FROM 4-8 PM)
- STAFF SERVICES FOR FUNERAL CEREMONY AT AN OUTSIDE FACILITY OR IN OUR CHAPEL
- USE OF OUR FUNERAL COACH (WITHIN 30 MILE RADIUS)

Total Itemized Price \$3,760.00

Total Package Savings \$1,070.00

Service Option "C" – Basic Service

\$2,195.00

- BASIC SERVICES OF THE FUNERAL DIRECTOR AND STAFF
- TRANSFER OF REMAINS TO FUNERAL HOME (WITHIN 30 MILE RADIUS AND OR 1 HOUR)
- EMBALMING
- DRESSING, CASKETING & BASIC COSMETIC CARE OF THE DECEASED
- USE OF FACILITIES AND STAFF SERVICES FOR VIEWING AND/OR VISITATION (4 HOURS FROM 4-8 PM)
- STAFF SERVICES FOR INTERMENT/COMMITTAL CEREMONY
- USE OF OUR UTILITY VEHICLE TO CEMETERY (WITHIN 30 MILE RADIUS, 3 HOUR LIMIT)

Total Itemized Price \$3,460.00

Total Package Savings \$1,265.00

Priority Disposition (Visitation, Funeral Ceremony, Interment/Committal or Cremation)

\$ 295.00

Douglass Family Mortuaries require a minimum of three working days, to complete standard disposition requirements, with the time starting at release of remains to us, weekends/holidays excluded. A request for priority disposition will only be considered when Public Agencies and/or Medical Staff have fulfilled their obligation in completing necessary documentation.

Special At-Need Service Packages

During these difficult economic times, we have recognized the financial difficulties our families are currently facing, we have designed two packages that could help serve our families. While you are free to arrange services on an itemized basis, the below service plans are designed to simplify the funeral arrangement process, and are offered on a cost-saving basis. As the options include various types of services, no credit for deletions or substitutions is possible. Due to the special nature of these packages, they may only be used in an "at-need" fashion and therefore cannot be used for "pre-need" or arrangements before the death has occurred. If you ask us to conduct more than one funeral service, additional charges may apply. Your funeral counselor welcomes your questions.

Service Option - Economic At-need Funeral Package

\$2,495.00

- BASIC SERVICES OF THE FUNERAL DIRECTOR AND STAFF
- TRANSFER OF REMAINS TO FUNERAL HOME (WITHIN 30 MILE RADIUS AND OR 1 HOUR)
- EMBALMING
- DRESSING, CASKETING & BASIC COSMETIC CARE OF THE DECEASED
- USE OF FACILITIES AND STAFF SERVICES FOR VIEWING AND/OR VISITATION (3 HOURS From 4 to 7 PM Weekday)
- STAFF SERVICES FOR FUNERAL CEREMONY AT AN OUTSIDE FACILITY OR IN OUR CHAPEL
- STAFF SERVICES FOR INTERMENT/COMMITTAL CEREMONY
- USE OF OUR UTILITY VEHICLE TO TRANSFER CASKET TO OUTSIDE FACILITY AND CEMETERY (WITHIN 30 MILE RADIUS)
- "ALEX" 20 GA CASKET WITH CREPE INTERIOR (Choice of White, Blue, Silver or Copper Colors)

(Additional fees will apply for cash advance items; including certified copies of the death certificate, disposition permit, sales tax, obituaries, clergy fees, motorcycle escorts, etc. Our staff will assist you in the coordination and securing of any and all cash advance items on your behalf.)

Total Itemized Price \$4,917.00

Total Package Savings \$2422.00

Service Option - Economic At-need Cremation Package

\$2195.00

- BASIC SERVICES OF THE FUNERAL DIRECTOR AND STAFF
- TRANSFER OF REMAINS TO FUNERAL HOME (WITHIN 30 MILE RADIUS AND OR 1 HOUR)
- EMBALMING
- DRESSING, CASKETING & BASIC COSMETIC CARE OF THE DECEASED
- USE OF RENTAL CASKET (AND RENTAL CASKET INSERT)
- USE OF FACILITIES AND STAFF SERVICES FOR VIEWING AND/OR VISITATION (3 HOURS From 4 to 7 PM Weekday)
- BASIC PLASTIC URN

(Additional fees will apply for cash advance items; including cremation fees, certified copies of the death certificate, disposition permit, sales tax, obituaries, clergy fees, motorcycle escorts, etc. Our staff will assist you in the coordination and securing of any and all cash advance items on your behalf.)

Total Itemized Price \$3,587.00

Total Package Savings \$1,392.00

Priority Disposition (Visitation, Funeral Ceremony, Interment/Committal or Cremation) \$ 295.00

Douglass Family Mortuaries require a minimum of three working days, to complete standard disposition requirements, with the time starting at release of remains to us, weekends/holidays excluded. A request for priority disposition will only be considered when Public Agencies and/or Medical Staff have fulfilled their obligation in completing necessary documentation.

These prices are effective as of September 6, 2017, but are subject to change without notice. The goods and services shown below are those we can provide to our customers. You may choose only the items you desire. However, any funeral arrangements will include a charge for our basic services and overhead. If legal or other requirements mean you must buy any items you did not specifically ask for, we will explain the reason in writing on the statement we provide describing the funeral goods and services you selected.

Basic Services of the Funeral Director and Staff

\$995.00

This fee is for our basic services and will be added to the total cost of the funeral arrangements you select. (This fee is already included in our charges for direct cremation, immediate burial, and forwarding or receiving remains). This fee includes the following: Personnel available 24 hours a day, 365 days a year to respond to initial call; Arrangement Conference; Coordinating service plans with cemetery, crematory, and/or other parties involved in the final disposition of the deceased; Clerical assistance in the completion of various forms and permits associated with a funeral; Also covers overhead, including facility maintenance, equipment and inventory costs, insurance, administration expenses, and government compliance

Preparation of the Deceased

Embalming

\$495.00

Except in certain special cases, embalming is not required by law. However, embalming may be necessary if you select certain funeral arrangements, such as a funeral with viewing. If you do not want embalming, you usually have the right to choose an arrangement that does not require you to pay for it, such as direct cremation or immediate burial.

Autopsy or Tissue Procurement Repair (per procedure repair)

From \$195.00

Other Preparation of the Deceased

Dressing, and casketing

\$200.00

Cosmetic care of embalmed remains

From \$200.00

Bathing, disinfecting and feature setting (eye/mouth closure) of unembalmed remains (required for visual identification) From \$195.00

Refrigeration (per 24 hour period) \$ 95.00

Restorative Art Fee (per hour) \$ 95.00

Use of Facilities and Staff Services

Use of facilities and staff services for viewing and/or visitation (per hour between 9 am and 4 pm)

\$125.00

Our services include set-up of viewing area, display of floral arrangements, supervision and attendance during the viewing and/or visitation.

Use of facilities and staff services for visitation or funeral ceremony in our chapel

\$475.00

Our services include coordinating the funeral arrangements, supervision and staff to assist with the ceremony.

Staff services for funeral ceremony at an outside facility (Per Ceremony)

\$475.00

Our services include coordinating the funeral arrangements, supervision and staff to assist with the ceremony.

Use of facilities and staff for memorial ceremony (without remains present) in our chapel

\$475.00

Our services include coordinating the memorial ceremony arrangements, supervision and staff to assist with the memorial ceremony.

Staff services for memorial ceremony (without remains present) at an outside facility

\$475.00

Our services include coordinating the memorial ceremony arrangements, supervision and staff to assist with the memorial ceremony.

Staff services for interment/committal ceremony

\$475.00

Our services include accompaniment of remains to cemetery, supervision and staff to assist with interment/committal ceremony.

Additional Visitation Hours (per hour, arranged in advance after 4 p.m.)

\$125.00

Additional charge for service held on Saturday, Sunday, or Holidays

\$250.00

Security Deposit (refundable if mortuary facilities and grounds are undamaged)

\$500.00

Document Translation, and or Specialized Processing

From \$150.00

Life Tributes Video Production (Includes Initial Copy of DVD)

\$ 65.00

15 to 35 Actual Photos on a Disc or USB Flash "Thumb" Drive to be provided 48 Hours before presentation time.

Insurance Assignment Processing Fee (Upon verification of approval of assignment to our mortuary) 15% of Contract Total

Automotive Equipment

Transfer of Remains to Funeral Home (Single man within a 30 mile radius and or one hour)

\$395.00

Additional Attendant Needed for Removal Per Man (residential, witness, and or difficult removals)

\$125.00

Funeral Vehicle (eg: hearse (within a 30 mile radius (3 hour limit)

\$695.00

Family Vehicle (eg: limousine (within a 30 mile radius (3 hour limit)

From \$895.00

Utility Vehicle (within a 30 mile radius (3 hour limit)

\$200.00

Flower Car (within a 30 mile radius (3 hour limit)

\$200.00

Additional Vehicle Usage Time (per hour)

\$125.00

Additional Mileage (over 30, per loaded mile)

\$ 4.00

Funeral Merchandise or Related Services

Casket Price Ranges (a complete price list will be provided at the funeral home)	From <u>\$4,495.00</u>	to	<u>\$1,095.00</u>
Ceremonial "Rental" Casket & Insert (Includes Pillow & Bedding)	Rental <u>\$ 395.00</u>	Insert	<u>\$ 295.00</u>
Alternative Container			<u>\$ 75.00</u>
Shipping Container Ranges		From	<u>\$ 395.00</u>
Outer Burial Containers (a complete vault price list attached. Setting, Cemetery and Weekend Fees Additional)	From <u>\$15,095.00</u>	to	<u>\$ 495.00</u>
Memorial Registry Books (English or Spanish Edition)		From	<u>\$ 55.00</u>
Service Folders (per 100, English <u>or</u> Spanish (standard text))		From	<u>\$ 55.00</u>
Color Photo on Service Folders or Prayer Cards (per 100, English <u>or</u> Spanish)			<u>\$ 125.00</u>
Catholic Prayer Cards (per 100, English <u>or</u> Spanish (standard text))		From	<u>\$ 55.00</u>
Memorial Bulletins/Obituaries (Per 100) (Family To Provide Necessary Obituary Information, Up To 3 Color Photos)		From	<u>\$ 175.00</u>
Crucifixes (Silver Tone, Bronze Tone, Hardwood, Risen Christ, Praying Hands)		From	<u>\$ 20.00</u>
Casket Bearer Gloves (White Cloth, 6 Pairs)			<u>\$ 20.00</u>
Rosary Beads		From	<u>\$ 15.00</u>
Floral Arrangements		From	<u>\$ 50.00</u>
Additional Life Tributes Disc/DVD			<u>\$ 15.00</u>
Memorial Markers/Monuments		From	<u>\$ 595.00</u>

Cash Advance Items *(we charge for our services in obtaining all cash advance items)*

Clergy Honorarium (Per Service)		From	<u>\$ 125.00</u>
Catholic Church Honorarium (Vigil Service, Funeral Liturgy, Rite of Committal (varies by church))		From	<u>\$ 300.00</u>
Musician Honorarium (Per Service)		From	<u>\$ 100.00</u>
Certified Copies of the Death Certificate (per copy, adult)			<u>\$ 21.00</u>
Certified Copies of the Death Certificate (per copy, fetal)			<u>\$ 18.00</u>
Disposition Permit (California Recording Fee, Required)			<u>\$ 12.00</u>
Crematory Fee (Individual cremations under 250lbs.)			<u>\$ 225.00</u>
Additional Crematory Fee (Individual cremations over 250lbs.)			<u>\$ 195.00</u>
Additional Crematory Fee (Private, individual Witness Cremation up to 6 persons)			<u>\$ 295.00</u>
Motorcycle Escorts (1 per every 8 -10 cars (2 minimum))		Each	<u>\$ 200.00</u>
Obituary Notices (Cost Varies by Newspaper (Actual/Estimated Cost))			_____
Medical Examiner/Coroner (Cost Varies by County (Actual Cost))			_____
Airline/Airfreight Charges (Determined By Airline (Actual/Estimated Cost))			_____
Receiving/Forwarding Funeral Home Charges (Actual/Estimated Cost)			_____
Consulate Charges (Actual/Estimated Cost)			_____

Forward/Receiving Remains

Forwarding Remains to Another Funeral Home

\$1,595.00

This charge includes removal of remains within a 30 mile radius, basic service of staff, embalming, bathing and handling of remains, use of preparation room, and transportation to local airport or other place of shipment within a 30 mile radius (excluding shipping charges and shipping container). This charge does not include possible consulate charges, visitation, or ceremonies.

Receiving Remains form Another Funeral Home

\$1,295.00

This charge includes basic services of staff, transportation from local airport or other shipping destination within a 30 mile radius, and transportation of remains to cemetery or crematory within a 30 mile radius. This charge does not include visitation or ceremonies.

Cremation Options Available

From \$1010.00 to \$2195.00

Our charge for direct cremation (without visitation or ceremonies) includes removal of remains within a 30 mile radius or one hour, refrigeration and shelter of remains, basic services of staff, and transportation to the crematory. **This is a service fee.**

Crematory charges will be added separate as a cash advance. The cremation is unscheduled and unattended by family. If you want to arrange a direct cremation, you can use an alternative container. Alternative containers encase the body and can be made of materials like fiberboard or other composition materials (with or without an outside covering).

Options

Direct cremation with container provided the by family

\$1,010.00

Direct cremation with alternative container (cardboard)

\$1,010.00

Cremation with a requested date by the family for cremation delivery or disposition

\$1,595.00

Cremation with Witnesses Present (includes cost incurred by the crematory)

\$1,895.00

Cremation with Interment/Committal Services

\$1,585.00

Cremation with Memorial Service (includes: attendant, use of chapel, recorded music)

\$1,585.00

Cremation with deceased present for viewing / service

\$2,195.00

(This charge includes embalming and other necessary preparation of the deceased; Use of the facilities and staff for visitation & viewing; Use of facilities and staff for funeral service. MERCHANDISE ADDITIONAL (Selected Casket, or use of Rental Casket \$395.00 + Insert \$295.00 (taxable) = TOTAL \$690.00)

Fees for Placement of Cremated Remains

At Sea (unwitnessed/unscheduled)

\$ 75.00

At Sea - Witnessed (up to 6 people)

From \$ 595.00

Delivery of cremated remains within 30 miles

\$ 75.00

Shipment Via Registered Mail (within the U.S.)

\$ 65.00

Shipment Via Scheduled Airline (plus airfare, includes delivery to LAX or Long Beach Airports)

\$ 195.00

Immediate Burial Options Available

From \$1295.00 to \$1995.00

Our charges for immediate burial (without any rites or ceremonies at the funeral home, graveside/interment site, or elsewhere) includes basic services of staff, transfer of remains to the funeral home (30 mile radius or one hour), refrigeration of remains, and transportation to cemetery with a 30 mile radius.

Options

Immediate burial with casket (plus cost of casket)

\$1,295.00

Immediate burial with container provided by purchaser

\$1,595.00

Immediate burial with minimum cloth covered casket

\$1,995.00

Immediate burial with casket (plus cost of casket) and Memorial Service Following

\$1,770.00

Mortuary charge for scheduled and/or witnessed interment

\$ 475.00

Infant / Child Services

Funeral Services Options Available

Our charges for infant / child services include: Basic services of the Funeral Director and staff; Transporting the remains within a 30 mile radius to the Funeral Home; Embalming and other necessary preparation of the deceased; Preparation of the Death Certificate and other necessary state and local documents; Use of the facilities and staff for viewing/visitation for 2 hours; Use of the equipment and staff for the graveside services. And use of the utility vehicle (van).

Options

Premature to 7 years (plus cost of casket)	<u>\$ 995.00</u>
8 years to 12 years (plus cost of casket)	<u>\$1,595.00</u>

Cremation Options Available

From \$295.00 to \$595.00

Our charge for direct cremation (without visitation or ceremonies) includes removal of remains within a 30 mile radius or 1 hour, refrigeration and shelter of remains, basic services of staff, and transportation to the crematory. The cremation is unscheduled and unattended by family. If you want to arrange a direct cremation, you can use an alternative container. Alternative containers encase the body and can be made of materials like fiberboard or other composition materials (with or without an outside covering).

Options

Premature with container provided by family or alternative container	<u>\$ 295.00</u>
1 to 12 years with container provided by family or alternative container	<u>\$ 595.00</u>
Requested date by the family for cremation / delivery / disposition	<u>\$ 195.00</u>
Witnessing insertion of encased remains into Cremation Chamber	<u>\$ 275.00</u>
Interment Site Services (within a 30 mile radius)	<u>\$ 395.00</u>
Memorial Service (in our chapel includes attendant, use of chapel, and recorded music)	<u>\$ 475.00</u>

Immediate Burial Options Available

From \$595.00 to \$895.00

These charges include the basic services of the Funeral Director and staff; Transporting the remains within a 30 mile radius or 1 hour to the Funeral Home; preparation of the Death Certificate and other necessary state and local documents; Use of the equipment and staff for transportation to a local cemetery. (Interment to be private and without attendees)

Options

Premature to 2 years (plus cost of casket)	<u>\$ 595.00</u>
3 years to 12 years (plus cost of casket)	<u>\$ 895.00</u>
Memorial Service (in our chapel includes attendant, use of chapel, and recorded music)	<u>\$ 475.00</u>
Mortuary charge for scheduled and/or witnessed interment (<i>without visitation or ceremonies</i>)	<u>\$ 475.00</u>

Forward/Receiving Remains

Forwarding Remains to Another Funeral Home	<u>\$1,595.00</u>
--	-------------------

This charge includes removal of remains within a 30 mile radius, basic service of staff, embalming, bathing and handling of remains, use of preparation room, and transportation to local airport or other place of shipment within a 30 mile radius (excluding shipping charges and shipping container). This charge does not include possible consulate charges, visitation, or ceremonies.

Receiving Remains from Another Funeral Home	<u>\$1295.00</u>
---	------------------

This charge includes basic services of staff, transportation from local airport or other shipping destination within a 30 mile or 1 hour radius, and transportation of remains to cemetery or crematory within a 30 mile radius. This charge does not include visitation or ceremonies.

***“There Is No Evidence That Any Casket
Represented As Having Protective Features,
Which May Include A Gasket, Will Preserve
Human Remains”***



Douglass

Douglass Family

MORTUARY

"Celebrating Life Through Memories Since 1945"

Telephone (310) 632-1171 · Fax (310) 632-7970 · Se Habla Español
3363 East Imperial Highway · Lynwood, California 90262 · FD803
www.douglassfamilymortuary.com

CASKET PRICE LIST

(Prices effective as of September 6, 2017, and subject to change without notice.)

"THERE IS NO EVIDENCE THAT ANY CASKET REPRESENTED AS HAVING PROTECTIVE FEATURES, WHICH MAY INCLUDE A GASKET, WILL PRESERVE HUMAN REMAINS"

This facility makes no representations or warranties about the protective value of certain caskets or outer burial containers other than those made by the manufacturer. The only warranties, expressed or implied, granted in connection with goods sold with this funeral service are the written warranties, if any, extended by the manufacturer thereof. No other warranties and, specifically, no warranties of merchantability and fitness for a particular purpose are extended by the seller.

These are the caskets that according to section 1258.1(e) that are regularly offered for sale. Although you may find caskets represented photographically or physically within our facility that are not on this list, those caskets are strictly special order and not regularly offered for sale and are therefore excluded from the 1258.1(e) requirements. We can give you a price for those caskets, if so desired based on our pricing structure of similar models.

If there is a conflict of pricing between the Casket Price List and the price indicated on the casket or picture, the lower of the two prices is what you will be charged.

Solid Hardwood Selections

<u>UNIT DESIGNATION</u>	<u>MATERIAL</u>	<u>EXTERIOR FINISH</u>	<u>INTERIOR FINISH</u>	<u>UNIT PRICE</u>
-------------------------	-----------------	------------------------	------------------------	-------------------



Colonial Cherry	Solid Cherry	Medium Stain – Cherry	Rosetan Velvet	\$4,495
-----------------	--------------	-----------------------	----------------	---------



Provincial	Solid Poplar	Dark Stain – Poplar	Rosetan Crepe	\$3,595
------------	--------------	---------------------	---------------	---------



Montgomery	Solid Ash	Medium Stain – Ash	Almond Velvet	\$3,395
------------	-----------	--------------------	---------------	---------



Bailey	Select Hardwood	Light Stain – Oak	Rosetan Crepe	\$3,295
--------	-----------------	-------------------	---------------	---------



Weyburn Last Supper	Hardwood Poplar	Medium Stain – Poplar	Rosetan Crepe	\$2,795
---------------------	-----------------	-----------------------	---------------	---------



Wilton	Solid Poplar	Dark Stain – Poplar	Rosetan Crepe	\$2,195
--------	--------------	---------------------	---------------	---------



Clifton	Hardwood	Medium Stain – Hardwood	Rosetan Crepe	\$1,995
---------	----------	-------------------------	---------------	---------



Lyra Natural	Veneer	Light Stain – Veneer	Rosetan Crepe	\$1,695
--------------	--------	----------------------	---------------	---------

18 Gauge Steel Selections

<u>UNIT DESIGNATION</u>	<u>MATERIAL</u>	<u>EXTERIOR FINISH</u>	<u>INTERIOR FINISH</u>	<u>UNIT PRICE</u>
-------------------------	-----------------	------------------------	------------------------	-------------------



Puritan	18 Gauge Steel Gasket	Brushed Steel Shaded Beige	Rosetan Crepe	\$3,795
---------	-----------------------	----------------------------	---------------	---------



AB3 Huntington Green	18 Gauge Steel Gasket	Dark Green	Rosetan Crepe	\$3,695
----------------------	-----------------------	------------	---------------	---------



Hamilton	18 Gauge Steel Gasket	White Shaded Silver Rose	Pink Crepe	\$2,695
----------	-----------------------	--------------------------	------------	---------



Hancock	18 Gauge Steel Gasket	Brushed Natural Shaded Ebony	Silver Crepe	\$2,595
---------	-----------------------	------------------------------	--------------	---------



Leo Brushed Ruby	18 Gauge Steel Gasket	Brushed Burgundy	Moss Pink Crepe	\$2,195
------------------	-----------------------	------------------	-----------------	---------

20 Gauge Steel Selections

<u>UNIT DESIGNATION</u>	<u>MATERIAL</u>	<u>EXTERIOR FINISH</u>	<u>INTERIOR FINISH</u>	<u>UNIT PRICE</u>
-------------------------	-----------------	------------------------	------------------------	-------------------



Ivory Gold	20 Gauge Steel Gasket	White Shaded Gold	Ivory Crepe	\$1,795
------------	-----------------------	-------------------	-------------	---------

20 Gauge Steel Selections

<u>UNIT DESIGNATION</u>	<u>MATERIAL</u>	<u>EXTERIOR FINISH</u>	<u>INTERIOR FINISH</u>	<u>UNIT PRICE</u>
-------------------------	-----------------	------------------------	------------------------	-------------------



Antique Blue	20 Gauge Steel Gasket	Dark Blue Shaded Silver	Light Blue Crepe	\$1,795
--------------	-----------------------	-------------------------	------------------	---------



Silver Tuscany	20 Gauge Steel Gasket	Light Orchid Shaded Silver	Moss Pink Crepe	\$1,795
----------------	-----------------------	----------------------------	-----------------	---------



Spectra Blue	20 Gauge Steel Gasket	Light Blue	Light Blue Crepe	\$1,595
--------------	-----------------------	------------	------------------	---------



Golden Jewel	20 Gauge Steel Gasket	Dark Green Shaded Gold	Rosetan Crepe	\$1,595
--------------	-----------------------	------------------------	---------------	---------



Gemini Copper	20 Gauge Steel Gasket	Medium Copper	Rosetan Crepe	\$1,395
---------------	-----------------------	---------------	---------------	---------



Alex Silver	20 Gauge Steel	Silver	White Crepe	\$1,095
-------------	----------------	--------	-------------	---------



Alex Copper	20 Gauge Steel	Copper	Ivory Crepe	\$1,095
-------------	----------------	--------	-------------	---------

20 Gauge Steel Selections

<u>UNIT DESIGNATION</u>	<u>MATERIAL</u>	<u>EXTERIOR FINISH</u>	<u>INTERIOR FINISH</u>	<u>UNIT PRICE</u>
-------------------------	-----------------	------------------------	------------------------	-------------------



Alex White	20 Gauge Steel	White	Pink Crepe	\$1,095
------------	----------------	-------	------------	---------



Alex Blue	20 Gauge Steel	Blue	Blue Crepe	\$1,095
-----------	----------------	------	------------	---------

Ceremonial (Rental) Casket

<u>UNIT DESIGNATION</u>	<u>MATERIAL</u>	<u>EXTERIOR FINISH</u>	<u>INTERIOR FINISH</u>	<u>UNIT PRICE</u>
-------------------------	-----------------	------------------------	------------------------	-------------------



Norwood <small>(Outer Shell Rental)</small> Ceremonial Insert <small>(Crematable)</small>	Solid Oak Cardboard	Medium – Oak Medium Cardboard	Rosetan Crepe Rosetan Crepe	\$395 \$295
--	------------------------	----------------------------------	--------------------------------	----------------

Alternative Container Selections

<u>UNIT DESIGNATION</u>	<u>MATERIAL</u>	<u>EXTERIOR FINISH</u>	<u>INTERIOR FINISH</u>	<u>UNIT PRICE</u>
-------------------------	-----------------	------------------------	------------------------	-------------------



Cardboard (Adult)	Cardboard	Medium Cardboard	None	\$75
-------------------	-----------	------------------	------	------

Child/Infant Casket Selections

<u>UNIT DESIGNATION</u>	<u>MATERIAL</u>	<u>EXTERIOR FINISH</u>	<u>INTERIOR FINISH</u>	<u>UNIT PRICE</u>
-------------------------	-----------------	------------------------	------------------------	-------------------



Youth (4'6")	20 Gauge Steel	White Shaded Gold	Oyster Crepe	\$1095
--------------	----------------	-------------------	--------------	--------



Douglass

Douglass Family

MORTUARY

"Celebrating Life Through Memories Since 1945"

Telephone (310) 632-1171 · Fax (310) 632-7970 · Se Habla Español
3363 East Imperial Highway · Lynwood, California 90262 · FD803
www.douglassfamilymortuary.com

OUTER BURIAL CONTAINER PRICE LIST

(Prices effective as of September 6, 2017, and subject to change without notice.)

Outer Burial Containers Range from \$15,095.00 to \$495.00

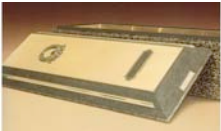
This facility makes no representations or warranties about the protective value of certain caskets or outer burial containers other than those made by the manufacturer. The only warranties, expressed or implied, granted in connection with goods sold with this funeral service are the written warranties, if any, extended by the manufactures thereof. No other warranties and specifically, no warranties of merchantability and fitness for a particular purpose are extended by the seller.

THE PREMIUM BRONZE



The premium Bronze Burial Vault; Concrete core triple reinforced with bronze, a high impact ABS Trilon thermoplastic interior and an ABS Marbelon encased plastic exterior; Brilliant, shimmering cover finished with 99lbs. of 34oz. non rusting bronze; Elegant contemporary design with solid die-cast handles and personalized bronze nameplate; Brass Memorialization Plus Capsule for enhanced personalization and identification
\$15,095.00

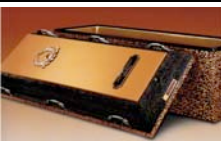
BRONZE TRIUNE



Finest double reinforced burial vault, with bronze and high impact ABS Trilon thermoplastic; Lustrous bronze carapace and accent bars; Brass Memorialization Plus capsule, special emblems and customized nameplate for enhanced personalization (emblems available: Cross, Crucifix, Wreath, Star of David or Chinese Long Life)

\$3,495.00

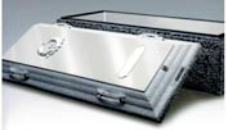
COPPER TRIUNE



Mid-line double reinforced burial vault, with copper and high-impact ABS Trilon thermoplastic reinforced cover and base; Rich copper beauty; Brass Memorialization Plus capsule, special emblems and customized nameplate for enhanced personalization (emblems available: Cross, Crucifix, Wreath, Star of David or Chinese Long Life)

\$3,295.00

STAINLESS STEEL TRIUNE



Double reinforced with stainless steel and high impact ABS Trilon thermoplastic; Brilliant stainless steel carapace; Brass Memorialization Plus capsule, special emblems and customized nameplate for enhanced personalization (emblems available: Cross, Crucifix, Wreath, Star of David or Chinese Long Life)

\$2,295.00

CAMEO ROSE



Double reinforced with stainless steel and high impact ABS Trilon thermoplastic; Soft white finished with pink accents and sculpted pink rose; Brushed stainless steel carapace; Brass Memorialization Plus capsule, special emblems and customized nameplate for enhanced personalization

\$2,295.00

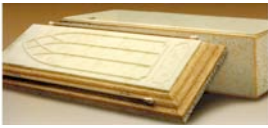
VETERAN TRIUNE



Double reinforced with stainless steel and high impact ABS Trilon thermoplastic; Dignified branch specific military emblems to honor veterans; Brushed stainless steel carapace; Brass Memorialization Plus capsule and customized U.S. flag nameplate for enhanced personalization.

\$2,295.00

VENETIAN



Finest single reinforced burial vault; High strength concrete with premium ABS Marbelon plastic reinforced cover and base

\$1,495.00

CONTINENTAL



Mid-line single reinforced burial vault; Durable concrete exterior with Strentex plastic reinforced cover and base

\$995.00

SALUTE



Single reinforced burial vault; Durable concrete exterior with Strentex plastic reinforced cover and base

\$995.00

MONTICELLO



Entry level single reinforced burial vault; Concrete exterior with Strentex plastic reinforced cover and base

\$895.00

#5 BASIC



Basic 2 piece concrete burial vault painted white; Cover or base not reinforced; No personalization options available

\$495.00